

Combined Fire Damper / Plenum Box

Description

For supply or extract air, the combined fire damper/plenum box is mainly used when a grille or diffuser is situated within a fire rated ceiling. Most GDL grilles or diffusers can be incorporated providing they have a hinged or removable core.

Construction

The plenum box is manufactured from heavy duty 18 gauge galvanised steel and incorporates a D15G0+00 Fire Damper.

Size

From 200 x 200 to 1200 x 1200 in 25mm increments.

How to Specify

STATE QUANTITY, THE PRODUCT CODING AND THE SIZE WIDTH X HEIGHT

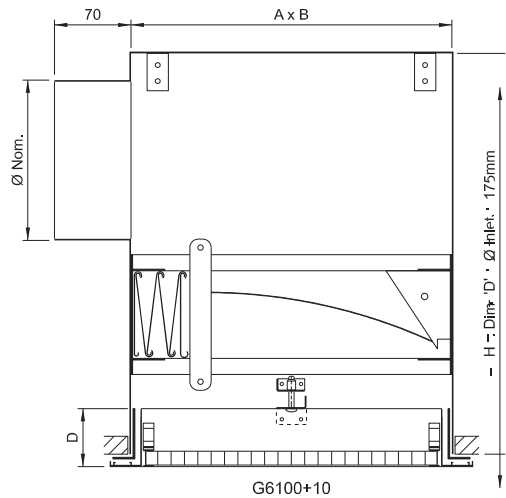
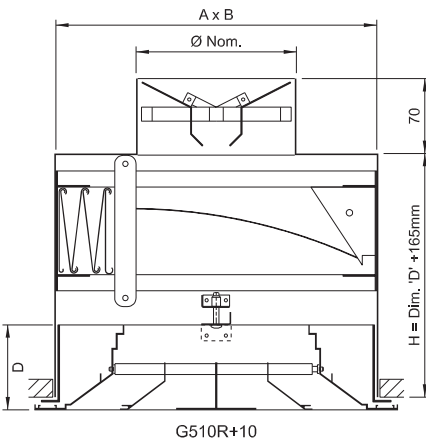
e.g. 10 Qty. G5100+10 500 x 300 - 200 Diameter.

Product Type	Fire Protection	Options	Accessories
G5 Heavy Gauge Top Inlet Plenum Box	1 60 Min. Curtain Fire Damper	0 None	0 None
G6 Heavy Gauge Side Inlet Plenum Box	2 60 Min. Intumescent Fire Block		R Twin Blade Damper F Flat Plate Damper

+

Fixings	Finish
1 Drop Rod Supported	0 Galvanised M/steel
2 Ceiling Construction Supported	

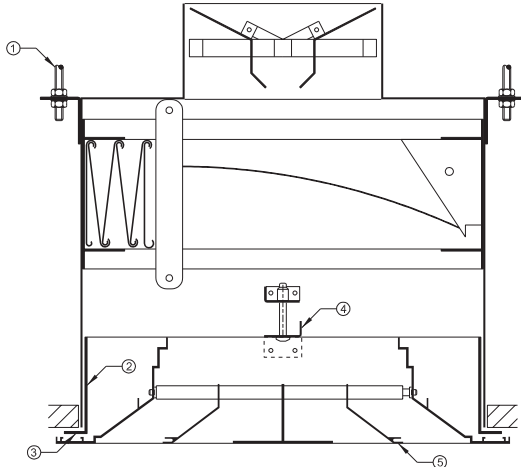
Where a G5 / G6 plenum box is used with a S4400 Multi-Cone diffuser, 'A' x 'B' = Diffuser Nom. neck size +108mm



Dim. 'D' = Total height of grille / diffuser including damper if fitted

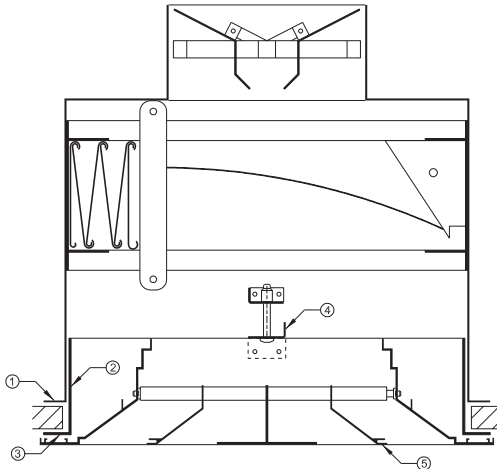
Combined Fire Damper / Plenum Box

Fixing Style +1
Drop Rod Supported



- (1) Plenums should be positioned within the ceiling void space temporarily prior to the tiles around the diffuser opening being fitted. When ready for installation position the plenum within the opening and secure via 8mm drop rods.
- (2) Offer up loose flanged slip-joint with an appropriate fire sealant at (3) and secure via the inside at regular intervals.
- (3) Offer up the diffuser frame and secure via factory mounted brackets and screws.
- (4) Offer up the diffuser frame and secure via factory mounted brackets and screws.
- (5) Finally insert quick release core.

Fixing Style +2
Ceiling Construction Supported



- (1) Plenums should be positioned within the ceiling void space temporarily prior to the tiles around the diffuser opening being fitted. When ready for installation position the plenum as illustrated and seal as appropriate.
- (2) Offer up loose flanged slip-joint with an appropriate fire sealant at (3) and secure via the inside at regular intervals.
- (3) Offer up the diffuser frame and secure via factory mounted brackets and screws.
- (4) Offer up the diffuser frame and secure via factory mounted brackets and screws.
- (5) Finally insert quick release core.

Note: The Relevant fire officer, local authority and/or ceiling contractor should be consulted for approval of this or other installation methods.