

High Induction Slot Diffusers

Description

For supply or extract air, the individual nozzle arrangement and micro-jet pattern provide a high-induction air flow, ensuring a rapid reduction of supply air speed and temperature differences. Suitable for wall or ceiling mounting.



Construction

From extruded aluminium sections, with cylindrical, black or white plastic nozzles.

Size

Height of slot diffuser is determined by the number of slots, usually to a maximum of five slots. The slot diffuser is designed to form long continuous lengths but is also effective in short sections.

How to Specify

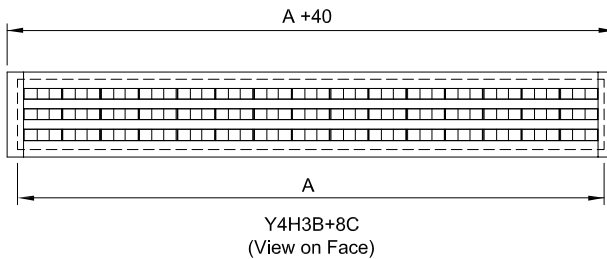
STATE QUANTITY, THE PRODUCT CODING AND THE SIZE WIDTH X HEIGHT

e.g. 10 Qty. Y4H30+8C 3000 Long.

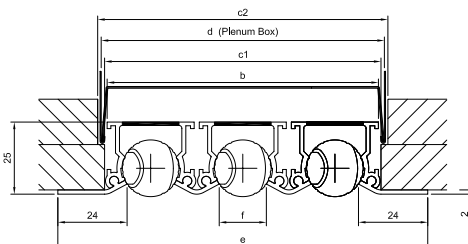
Frame Style	Options	Slot Quantity	Accessories
Y4 24mm Border 2 End Caps	H High Induction	1 > 5	B Black Nozzles
Y3 24mm Border 1 End cap			W White Nozzles
Y2 24mm Border No End Caps			



Fixings	Finish
8 Concealed Rear Bracket	C PPC BS /RAL Colour



A = Plenum size (Nominal)
Aperture size = A + 10
See Page 50



f	1	2	3	4	5
Slot Qty	1xf	2xf	3xf	4xf	5xf
b	31	63	96	128	161
c1	32	65	97	130	162
c2	37	70	102	135	167
d	35	67	100	131	165
e	65	98	130	163	195
f	17	17	17	17	17