

Swirl Diffusers

Description

For supply or extract air, fixed blade swirl diffuser mounted in square plate to assist installation in the ceiling. The recessed core diffuser is used for horizontal air distribution whilst the flush face style is more suitable for vertical air distribution when mounted at higher levels.

Construction

From pressed sheet steel and welded inner vanes. Supplied in white RAL 9010 polyester powder paint as standard.

Size

Available in 160, 200, 250, 315 and 400mm Ø neck sizes.

How to Specify

STATE QUANTITY, THE PRODUCT CODING AND THE SIZE WIDTH X HEIGHT

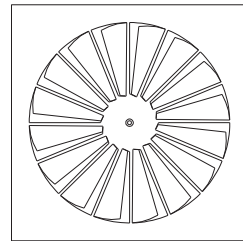
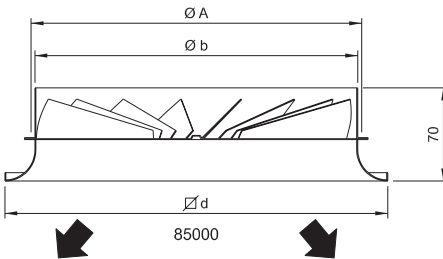
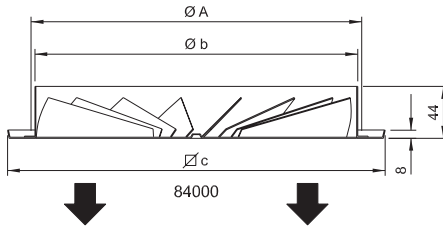
e.g. 10 Qty. 8552K+4B 315 Ø.



Frame Style	Options	Options	Accessories
84 Square Face Swirl	0 None	0 None	0 None
85 Square Face Swirl	5 Plenum / Duct Fixing Bar	5 Top Inlet Reducer	K Perforated Flat Plate Damper
		2 Side Inlet Plenum	



Fixings	Finish
2 Neck Fixings	B PPC RAL 9010 White
4 External Drop Rod Lugs	C PPC BS/RAL Colour



Size	Dimensions (mm)			
	Ø A	Ø b	Ø c	Ø d
Ø 160	160	158	198	248
Ø 200	200	198	248	248
Ø 250	250	248	298	298
Ø 315	315	312	398	398
Ø 400	400	398	594	594

Swirl Diffusers

Description

For supply or extract air, fixed blade circular swirl diffuser. The recessed core diffuser is used for horizontal air distribution whilst the flush face style is more suitable for vertical air distribution when mounted at higher levels.

Construction

From pressed sheet steel and welded inner vanes. Supplied in white RAL 9010 polyester powder paint as standard.

Size

Available in 160, 200, 250, 315 and 400mm Ø neck sizes.

How to Specify

STATE QUANTITY, THE PRODUCT CODING AND THE SIZE WIDTH X HEIGHT

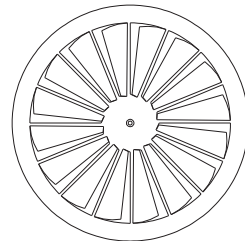
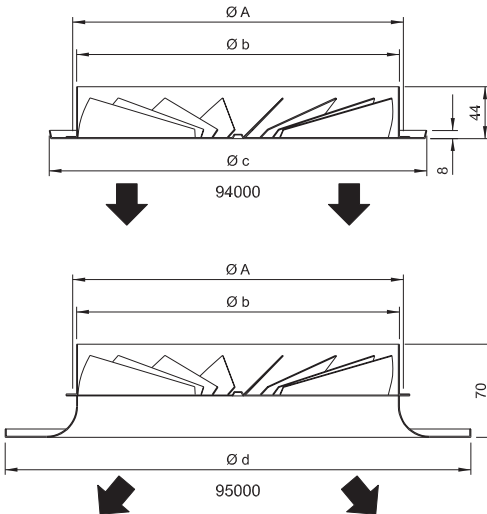
e.g. 10 Qty, 95500+2B 315 Ø.



Frame Style	Options	Options	Accessories
94 Circular Face Swirl	0 None	0 None	0 None
95 Circular Face Swirl	5 Plenum / Duct Fixing Bar	5 Top Inlet Reducer 2 Side Inlet Plenum	K Perforated Flat Plate Damper



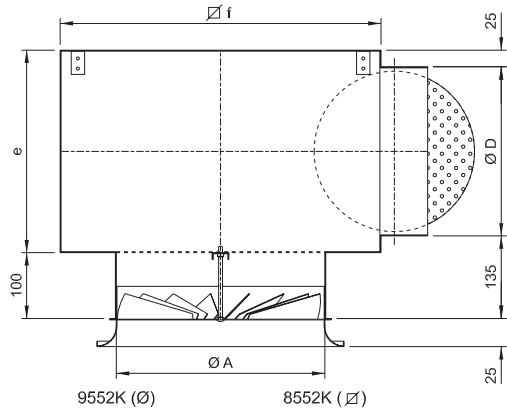
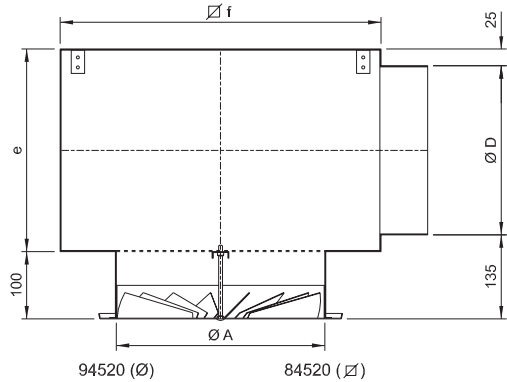
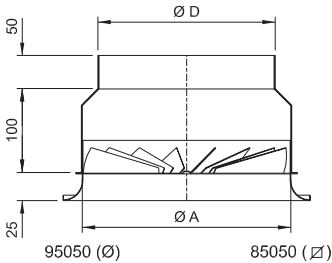
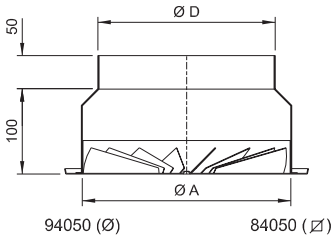
Fixings	Finish
2 Neck Fixings	B PPC RAL 9010 White
4 External Drop Rod Lugs	C PPC BS/RAL Colour



Size	Dimensions (mm)			
	Ø A	Ø b	Ø c	Ø d
Ø 160	160	158	198	250
Ø 200	200	198	248	300
Ø 250	250	248	298	350
Ø 315	315	312	363	450
Ø 400	400	398	600	570

Swirl Diffusers

Size	Dimensions (mm)			
	Ø A	Ø D	e	∅ f
Ø 160	160	123	185	325
Ø 200	200	158	220	375
Ø 250	250	198	260	475
Ø 315	315	248	310	500
Ø 400	400	313	375	600



Pt (Pascals) (Diffuser Only)		6	11	17	24	33	46
Pt (Pascals) (Diffuser + Neck Reducer)		8	14	23	36	48	67
Pt (Pascals) (Diffuser + Side Inlet Plenum)		10	18	35	45	62	80
Size	Vk (m/s)	2.5	3.5	4.5	5.5	6.5	7.5
Ø 160 Ak(m²) 0.0078	q(l/s)	-	27	35	43	50	58
	Lt (metres)	-	.5 - .75	.6 - 1.0	.75 - 1.2	.9 - 1.3	1.0 - 1.5
	NC	-	18	24	28	31	33
Ø 200 Ak(m²) 0.0126	q(l/s)	32	44	57	69	82	95
	Lt (metres)	.4 - .7	.6 - 1.0	.75 - 1.2	.9 - 1.4	1.2 - 1.75	1.4 - 2.0
	NC	-	20	26	31	33	36
Ø 250 Ak(m²) 0.0197	q(l/s)	49	69	89	108	128	148
	Lt (metres)	.5 - .8	.75 - 1.2	1.0 - 1.5	1.25 - 1.8	1.5 - 2.2	1.75 - 2.5
	NC	17	22	28	32	35	39
Ø 315 Ak(m²) 0.031	q(l/s)	78	109	140	171	203	234
	Lt (metres)	.75 - 1.0	1.0 - 1.4	1.25 - 2.0	1.6 - 2.4	2.0 - 2.9	2.5 - 3.5
	NC	22	27	32	36	41	48

Data is based upon the flush face model (types 94000 & 84000) ceiling mounted 2.7 metres high supplying cool air -10° below room temperature.