

Swirl Diffusers

Description

For supply air, having fully adjustable air pattern blades. Whilst maintaining the air distribution benefits of a swirl diffuser, its adjustable vanes offer the flexibility required to overcome problems with the supply of warm and cool air into a modern office application.

Construction

From pressed sheet steel with adjustable aluminium vanes supplied either black as standard or optional RAL 9010.

Size

Available in sizes 395 x 395mm overall to 820 x 820mm overall. The most common being the 595 x 595mm overall to suit a standard lay-in ceiling grid.

How to Specify

STATE QUANTITY, THE PRODUCT CODING AND THE SIZE WIDTH X HEIGHT

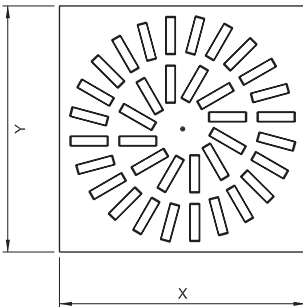
e.g. 10 Qty. 87C2K+6B 595 x 595mm overall.



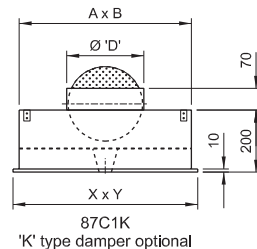
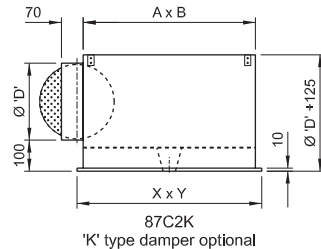
Frame Style	Size Code	Options	Accessories
87 Circular Swirl Diffuser	A > E	2 Side Inlet Plenum 1 Top Inlet Plenum 0 None	0 None K Perforated Flat Plate Damper



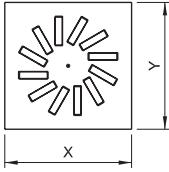
Fixings	Finish
4 External Drop Rod Lugs	B PPC RAL 9010 White
6 Lay-in Tile Replacer	C PPC BS/RAL Colour



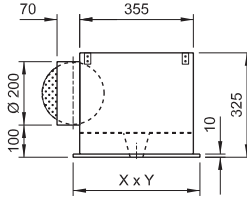
Size Code	Dimensions (mm)		
	X x Y	A x B	Ø 'D'
A	395 x 395	355 x 355	Ø 198
B	495 x 495	355 x 355	Ø 198
C	595 x 595	555 x 555	Ø 248
D	620 x 620	555 x 555	Ø 248
E	820 x 820	790 x 790	Ø 313



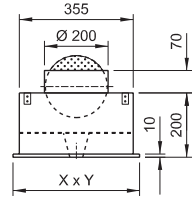
Swirl Diffusers



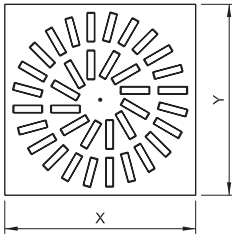
A X x Y = 395 x 395



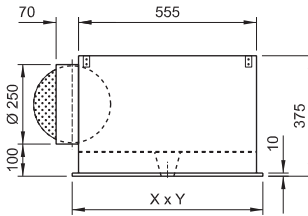
87A2K
'K' type damper optional



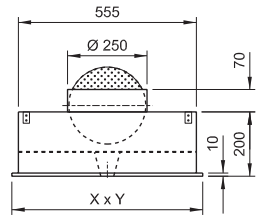
87A1K
'K' type damper optional



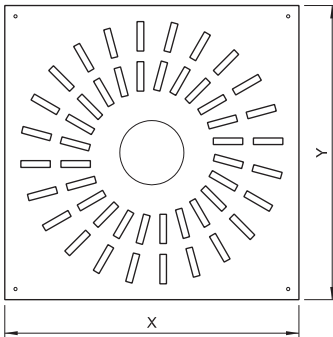
C X x Y = 595 x 595



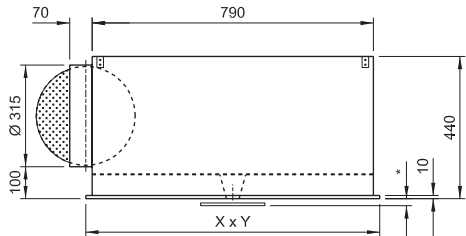
87C2K
'K' type damper optional



87C1K
'K' type damper optional



E X x Y = 820 x 820



87E2K
'K' type damper optional

* Adjustable 30 > 50mm
(Central Air Outlet Slot)

Size	Vk (m/s)	2.5	3.5	4.5	5.5	6.5	7.5
	Pt (Pascals)	9	16	26	40	55	77
A (395 x 395)	q(l/s)	35	49	63	77	91	105
	Lt (metres)	.3 - .5	.5 - .9	.6 - 1.0	.8 - 1.2	.9 - 1.4	1.0 - 1.6
		Ak(m²) 0.0140	-	19	24	28	31
C (595 x 595)	q(l/s)	100	138	178	218	257	297
	Lt (metres)	.6 - .9	.8 - 1.2	1.0 - 1.5	1.25 - 1.8	1.5 - 2.1	1.8 - 2.4
		Ak(m²) 0.0396	20	24	29	33	35
D (620 x 620)	q(l/s)	125	175	225	275	325	375
	Lt (metres)	.7 - 1.0	.9 - 1.3	1.1 - 1.6	1.4 - 2.0	1.7 - 2.3	2.0 - 2.6
		Ak(m²) 0.050	21	25	31	34	37